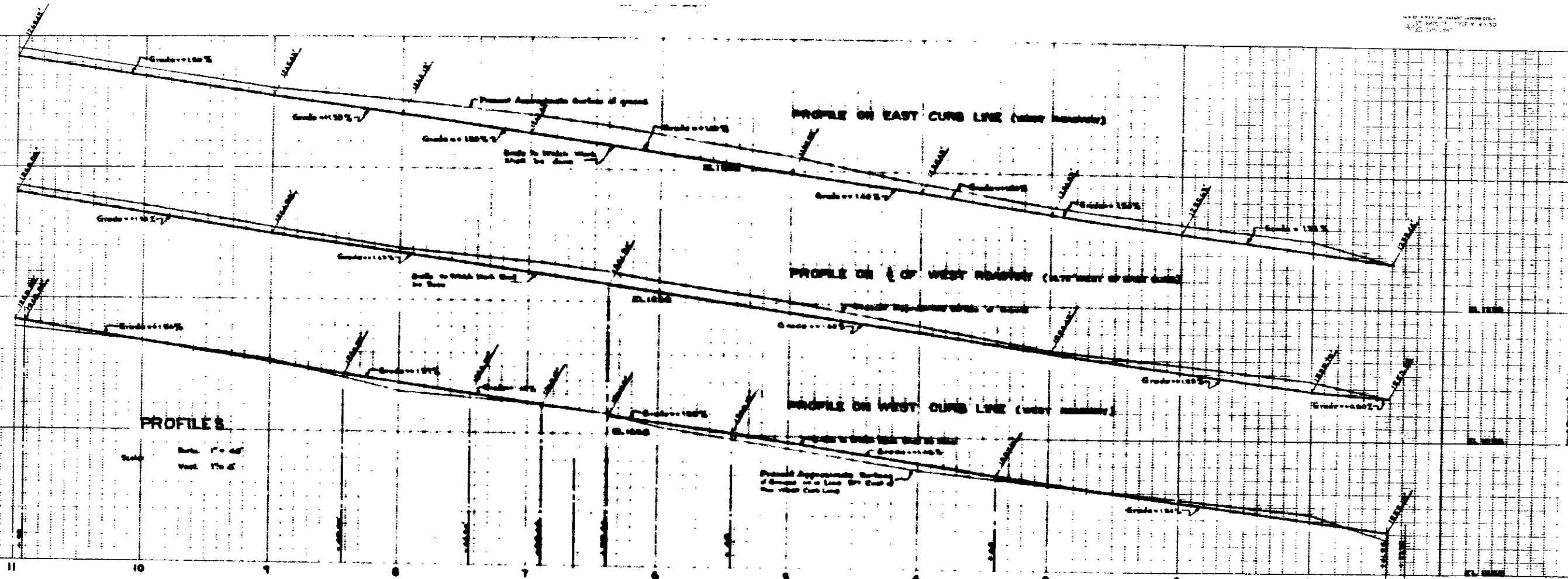


11/15/30

4-2-30



NOTE

- All existing utility structures shall be left in place and covered by the new concrete sidewalk on the east, the west property line of Mountain View Avenue (west) on the west, Station 0+200 on the south, and Station 0+125 on the north shall be removed.
- All work contained in these plans shall be done in conformity with applicable provisions of specifications No. 2027.
- 2" x 2" SIDE FORMS - These shall be made of 2" x 2" lumber, shall be constructed and left in place permanently. Material shall be pressure treated select structural grade planed grade Douglas Fir as defined by Standard Grading Rules No. 80 of the West Coast Lumbermen's Association. All cut ends shall be saturated with a solution of Neuman Salts or equivalent.

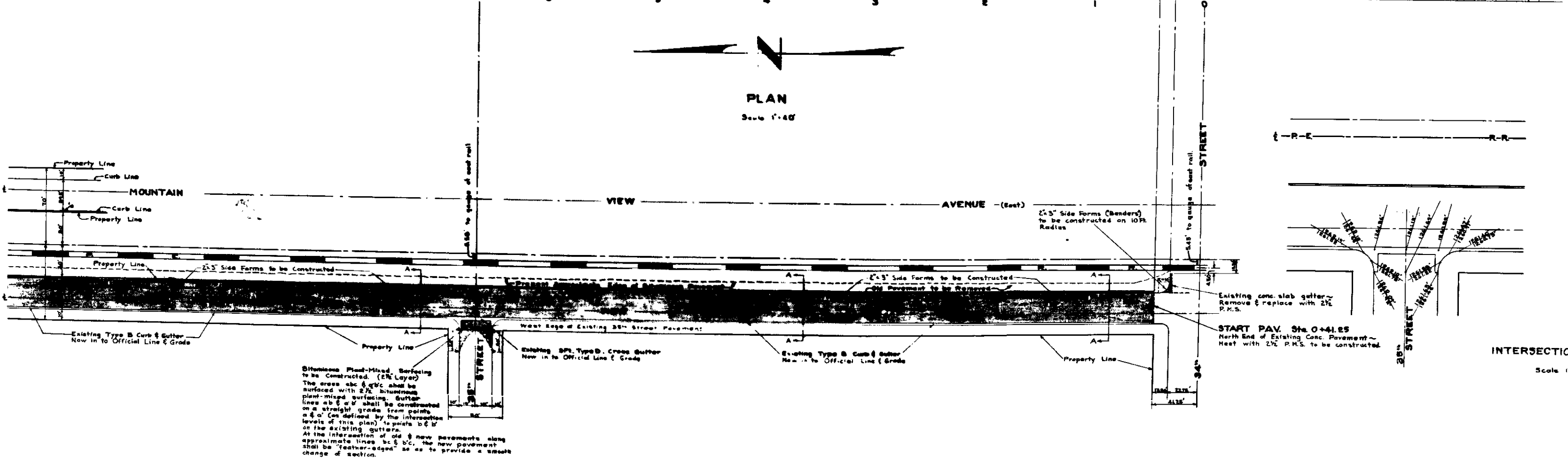
PROFILES

Scale: Vert. 1" = 4'

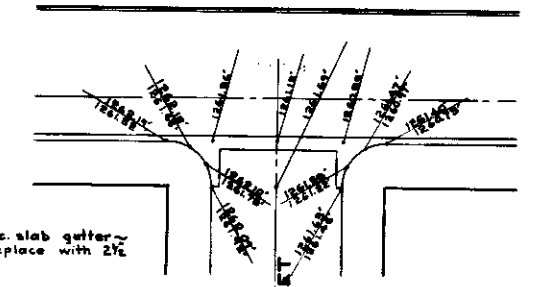


PLAN

Scale 1" = 40'



← P-E → R-R →



START PAV. Sta. 0+41.25
North End of Existing Conc. Pavement - West with 2% P.S. to be constructed.

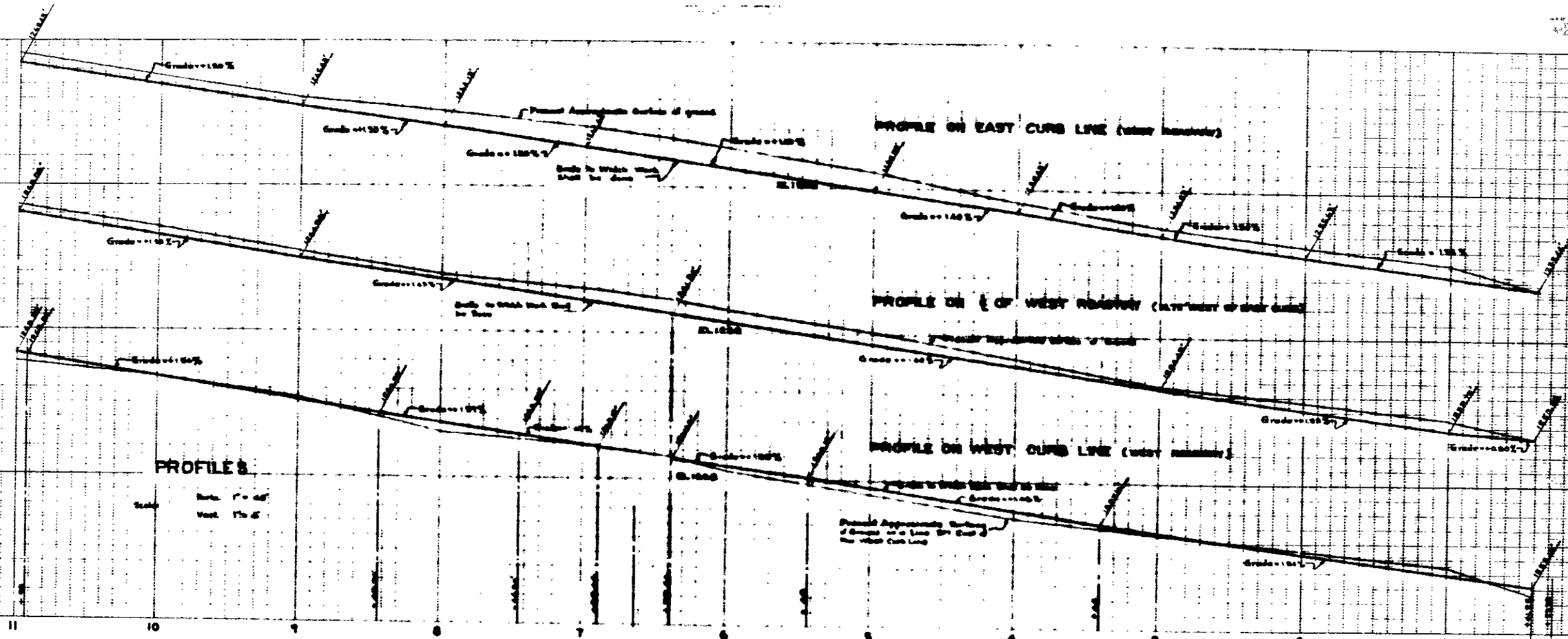
INTERSECTION

Scale 1" = 40'

Bituminous Plant-Mixed Surfacing to be Constructed. (2 1/2" Layer)
The areas abc & abc' shall be surfaced with 2 1/2" bituminous plant-mixed surfacing. Gutter lines ab & a'b' shall be constructed on a straight grade from points a & a' (as defined by the intersection levels of this plan) to points b & b' on the existing gutters.
At the intersection of old & new pavements along approximate lines bc & b'c', the new pavement shall be "feather-edged" so as to provide a smooth change of section.

1000 1000
7.5 100

1000 1000
7.5 100



- NOTE**
- All existing underground utilities for this work located by the West City of the Pacific Electric Railroad on the east, the West Property Line of Mountain View Avenue (west) on the west, Station 0+200 on the south, and Station 0+12.00 on the north shall be traversed.
 - All work contained in these plans shall be done conformably with applicable provisions of specifications No. 2027.
 - 2" x 2" SIDE FORMS - Where used in this plan, all forms shall be constructed and left in place permanently. Material shall be pressure treated select structural grade planed grade Douglas Fir as defined by Standard Grading Rules No. 80 of the West Coast Lumbermen's Association. All cut ends shall be saturated with a solution of Neolman Salts or equivalent.

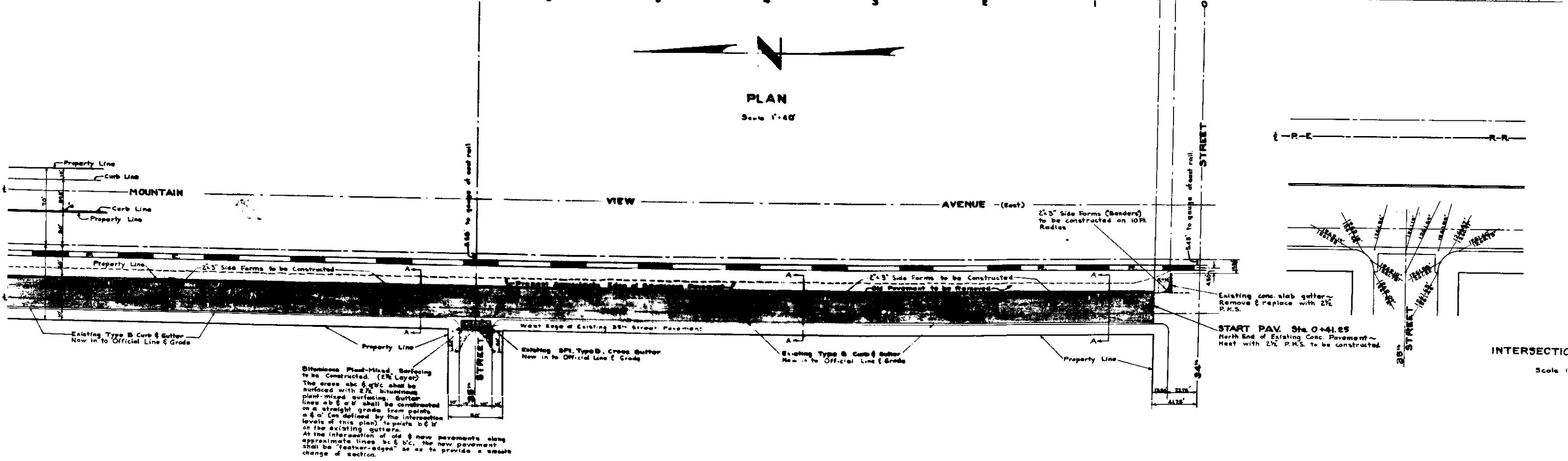
PROFILES

Scale: Vert. 1" = 4'
Horiz. 1" = 40'

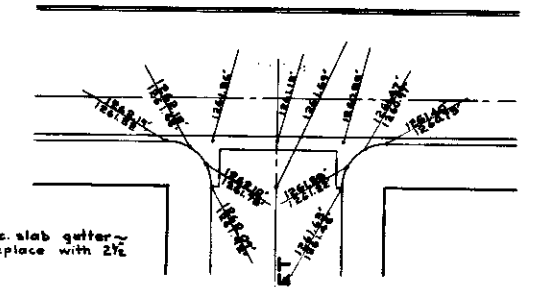


PLAN

Scale 1" = 40'



← P-E → R-R →



START PAV. Sta. 0+41.25
North End of Existing Conc. Pavement -
West with 2% P.M.S. to be constructed.

Bituminous Plant-Mixed Surfacing to be Constructed. (2% Layer)
The areas abc & abc' shall be surfaced with 2% bituminous plant-mixed surfacing. Gutter lines ab & a'b' shall be constructed on a straight grade from points a & a' (as defined by the intersection levels of this plan) to points b & b' on the existing gutters.
At the intersection of old & new pavements along approximate lines bc & b'c', the new pavement shall be "feather-edged" so as to provide a smooth change of section.

INTERSECTION

Scale 1" = 40'